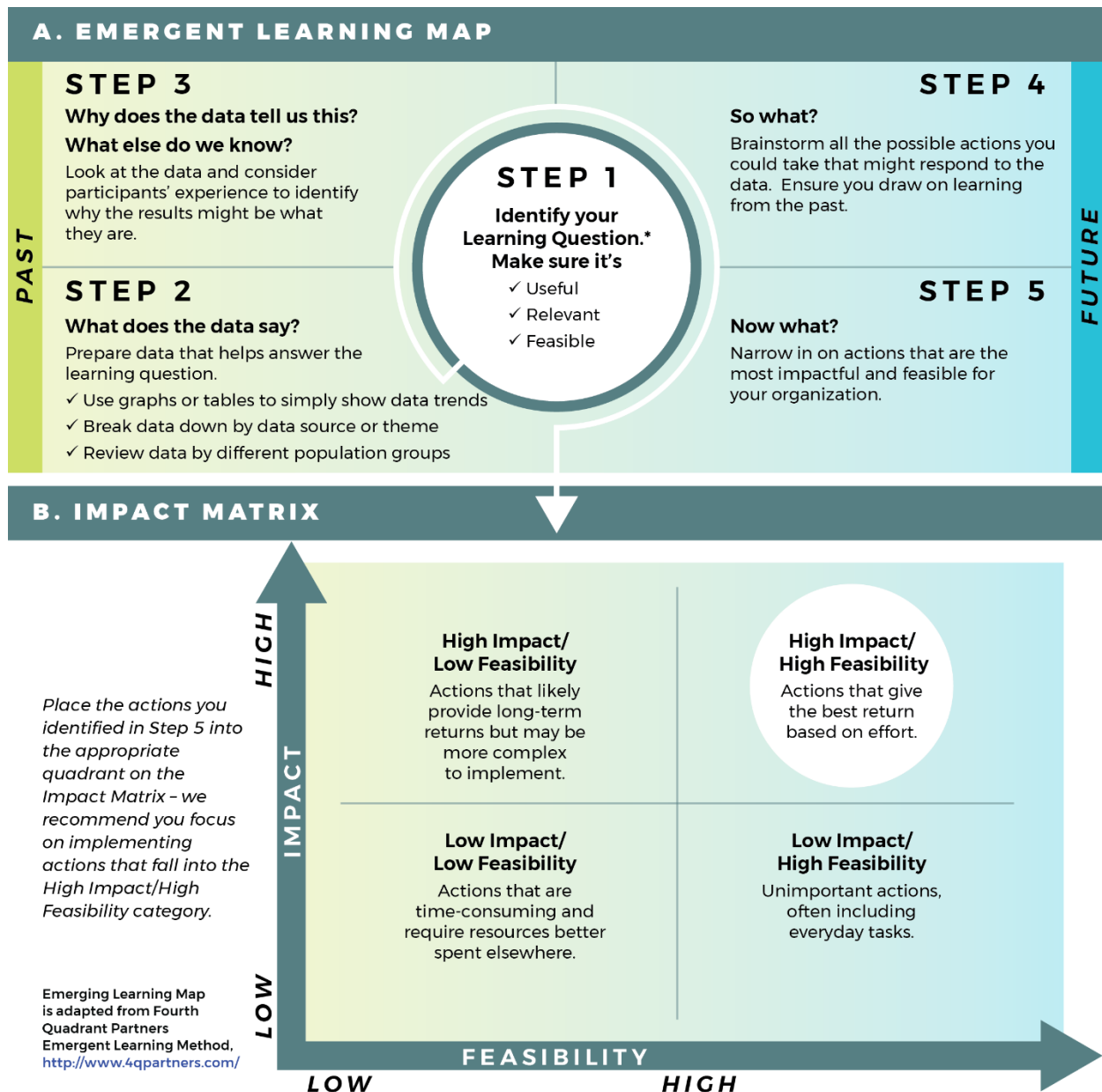


Making Rapid, Data-Driven Decisions

A PRACTICAL APPLICATION TO A RAPID SOLUTION DESIGN PROCESS

ResultsLab recommends that organizations use **Rapid Solution Design** to quickly and collaboratively design solutions to meet participants' needs. The step-by-step data-driven process below provides a decision-making structure that can be utilized in a rapidly changing environment, again and again.

First: Follow the steps below to create an Emergent Learning Map (A) to allow you to collect, reflect on data and answer critical questions to develop an action plan that will drive programmatic improvements for your participants. **Second: Create an Impact Matrix (B)** – A tool that will empower you to strategically prioritize actions generated through your emergent learning process to ensure practical forward movement.



*Learning Question is a programmatic and/or organizational question that can be answered with data.

HOW TO LEVERAGE THE RAPID SOLUTION DESIGN VIRTUALLY:

- Send data to teams in advance
- Make data easily interpretable – use graphs or tables
- Break data down by data source or theme
- Break down your data by population groups (e.g., age, race/ethnicity, location, etc.)
- Share your screen and populate the Emergent Learning Map and Impact Matrix in real-time

MOVE THE DIALOGUE TO ACTION:

- Include organizational leadership and frontline staff
- Consider inviting partners that serve a similar client-base; no one organization can meet all emerging community needs
- Leave your session and distribute concrete action items of what will be done, by whom, and when

